

Hunts Grove

Maintenance & Issues Report: October 2021

Hunts Grove Parish Council (HGPC) has started surveying the complete village each month prior to the parish council meeting. This is a result of residents and councillors concerns that the situation on site has deteriorated significantly and is not being addressed fully by Crest Nicholson.

HGPC commit to publishing a monthly report on its website for as long as is necessary to raise awareness of these issues and to get them resolved satisfactorily.

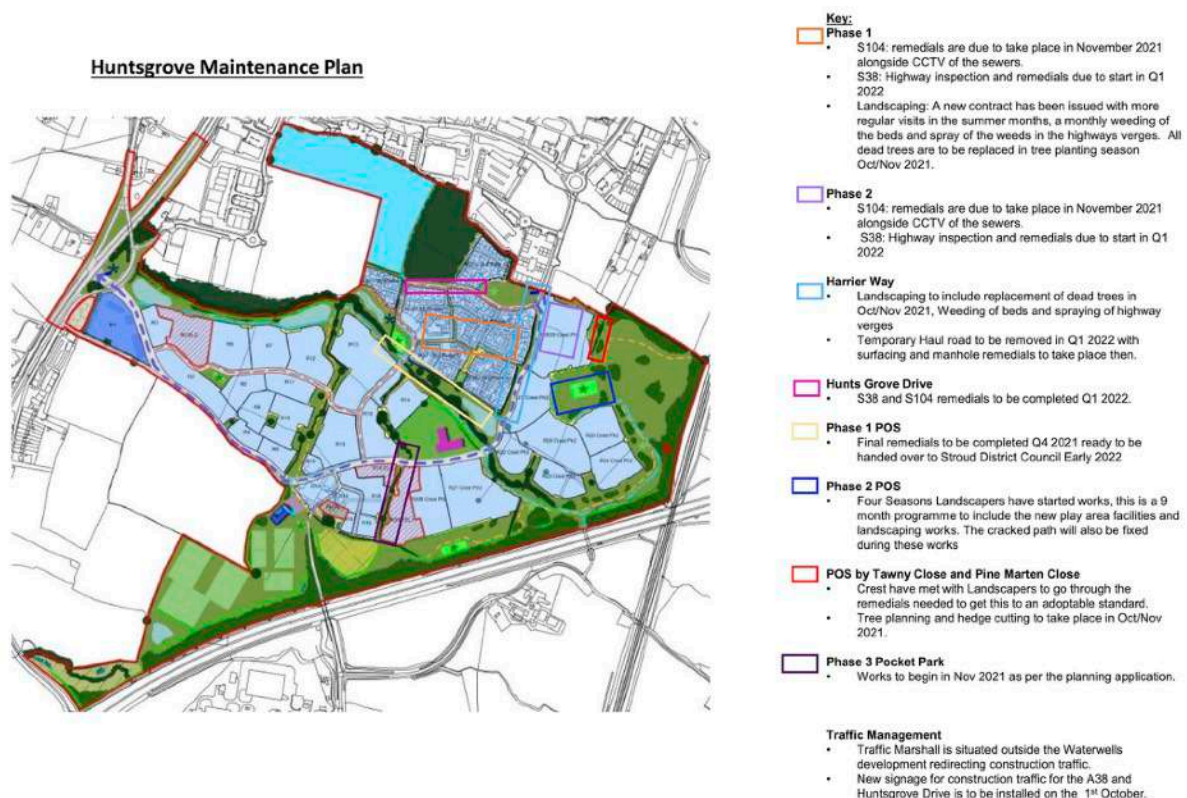
Play park reports are already compiled by Cllr Turner-Wilkes and reviewed at the monthly Parish Council meeting.

Progress Since September Report

Of all the issues reported and illustrated in our September report, the only progress we can see is that the area behind Pine Marten Close play park has been cut, however the hedgerow side is shoulder high with weeds. Also, the footpath on the northern boundary of the site that links Pine Marten west to Hunts Grove Drive, the housing side of the path was cut last week, however the hedgerow side is very unkempt and overgrown with weeds.

Further to Councils' action in September, and considerable pushing, Crest Nicholson have sent us a high-level maintenance list for the next six months. The council is seeking a greater level of engagement on the issues we are raising and clearing the items from this report.

Where possible, we are now using <https://what3words.com/> references that identify exact locations.



Marconi Drive

Surveyed by Cllr Ryder



Marconi Drive - Overgrown and substantial weeds in kerb



Marconi Drive - Weeds higher than the fence!



Marconi Drive - Weeds along footpath



Marconi Drive / Booth Way - weeds in verges

Phase 1

Surveyed by Cllr Ryder



Acorn Park - Massive die-back of the Salix plants, eaten by Willow Beetle, and full of weeds



HUNTS GROVE DRIVE - kerbs full of weeds



HUNTS GROVE DRIVE - Verge full of weeds



HUNTS GROVE DRIVE - Dead trees need replacing



ACORN PARK - path subsidence



HUNTS GROVE DRIVE - Dead tress need replacing



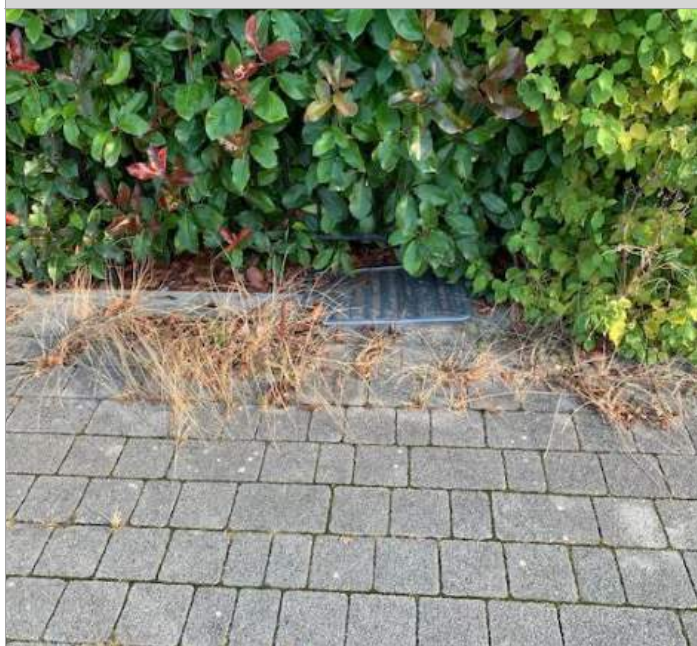
HUNTS GROVE DRIVE - Severe subsidence of path



LIME TREE AVENUE - Verge full of weeds



LIME TREE AVENUE - Pavers damaged



LIME TREE AVENUE - Weeds in pavement



LIME TREE AVENUE - Snapped tree, needs replacing



LIME TREE AVENUE - Another missing tree, plus resident tried to improve look with mulch as the planting spots look awful as they are



LIME TREE AVENUE - Another missing tree and overgrown with weeds



HUNTERS WAY - Weeds in kerb line



HUNTERS WAY - Weeds in kerb line



HUNTERS WAY - Weeds in verge and path subsidence



WHITSTONE RISE - Weeds in verge



WILLOW EDGE - Pocket Park - Weeds



WILLOW EDGE - Pavement subsidence



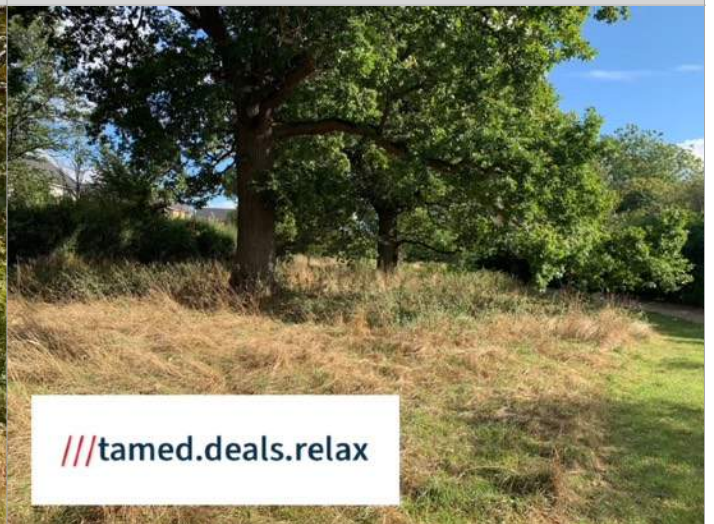
SHORN BROOK POS - Completely overgrown with weeds



SHORN BROOK POS - Completely overgrown with weeds



SHORN BROOK POS - tree maintenance required



SHORN BROOK POS - Overgrown with weeds



HUNTS GROVE DRIVE - collapsed kerbs and drainage issues



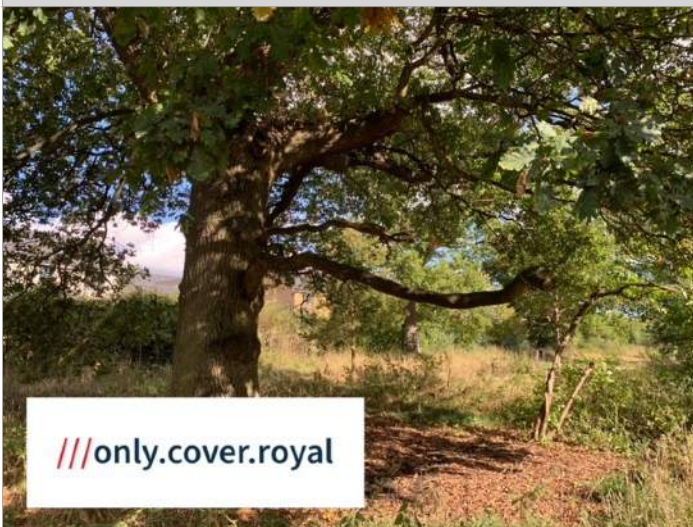
HUNTS GROVE DRIVE - collapsed kerbs



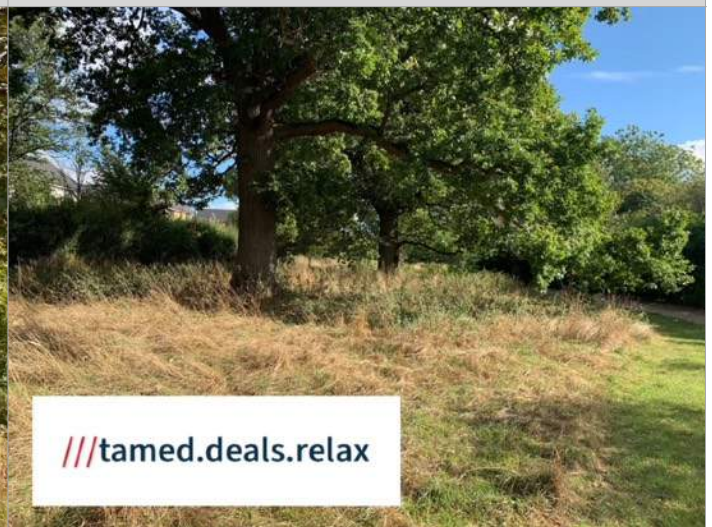
LIME TREE AVENUE



LIME TREE AVENUE - damage to tree due to incorrect tree staking



SHORN BROOK POS - tree maintenance required



SHORN BROOK POS - Overgrown with weeds

Phase 2

Surveyed by Cllr Meecham & Cllr Hampson



The landscaped area to the left of 3A Hunts Grove Drive and right of the entrance to Harrier way – overgrown with weeds.



HARRIER WAY - Huge crack in tarmac leading to the bus stop.. photo references Harrier way 2 and 3



HARRIER WAY - Hedgerow overgrown



HARRIER WAY - Behind the boarding, the verges and the hedgerow are very overgrown.



///handy.extend.copies

HARRIER WAY - Tree planted too high, will die



///fear.cave.split

HARRIER WAY - Tree planted in conflict with lamp post - which will survive long term?



///sank.cabin.when

BRAMBLING WAY - New trees already dead



///event.into.across

SHORN BROOK nr WARBLER CLOSE - Flytipping has been dumped behind fence



SISKIN WAY - Verge around the Siskin Way road sign overgrown with weeds.



PINE MARTIN CLOSE - one side has been cut but the hedgerow side is about shoulder height with weeds. This is an area which I believe should be a wild flower meadow but there is no sign of this. Dead trees.



PINE MARTIN CLOSE - one side has been cut but the hedgerow side is about shoulder height with weeds. This is an area which I believe should be a wild flower meadow but there is no sign of this. Dead trees.



PINE MARTIN CLOSE - Tree fallen down and looks to be dead



TAWNY CLOSE - Path - The housing side of the path is maintained and was cut just this week but the hedgerow side is very unkempt and is overgrown with weeds.



TAWNY CLOSE - Path - The housing side of the path is maintained and was cut just this week but the hedgerow side is very unkempt and is overgrown with weeds.

The path floods in heavy rain and needs drainage.



TAWNY CLOSE - Weeds and lack of maintenance



HARRIER WAY - Verges full of weeds



PHASE 2 POS - Building materials left by DWH ploughed into the soil by contractor. The areas have been seeded by the contractor, so presumed finished?! Nothing will grow properly and it will not be acceptable for handover to the management company.



PHASE 2 POS - Examples of similar conditions in an area set to grass



PHASE 2 POS - Lots of building materials, pallets, farm gates and general rubbish left by DWH



PHASE 2 POS - Lots of building materials. Very poor soil condition.



PHASE 2 POS - Very poor soil condition



PHASE 2 POS - Oil drum? Contents? Has been mown around, but not removed?



LUTRA CLOSE - Unmaintained hedgerow spilling out onto the grass area.





LUTRA CLOSE - Unmaintained hedgerows. Contains chippings dumped by Crest contractors as well as barbed wire that has been requested to be removed on a number of occasions.



SISKIN WAY - Verges completely overgrown with weeds



SISKIN WAY - Dead trees, posts left from signs



SISKIN WAY - Ongoing flooding issues from main POS



SISKIN WAY - Blocked drain



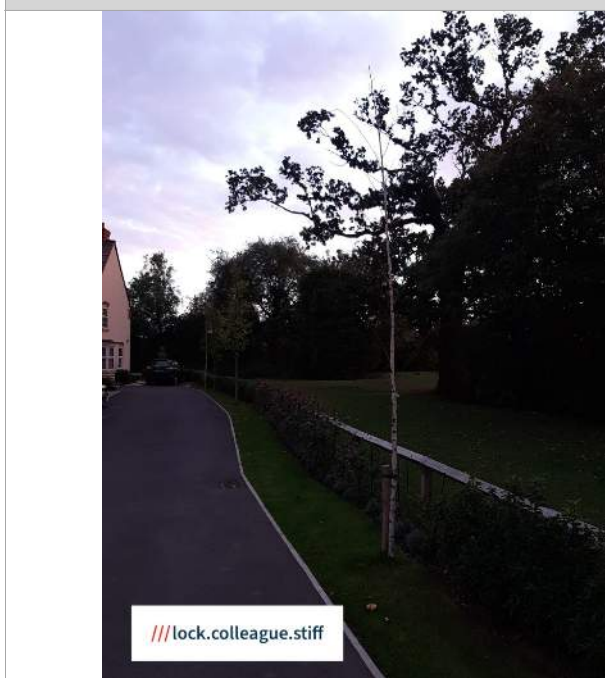
SISKIN WAY - Post left in verge, overgrown weeds



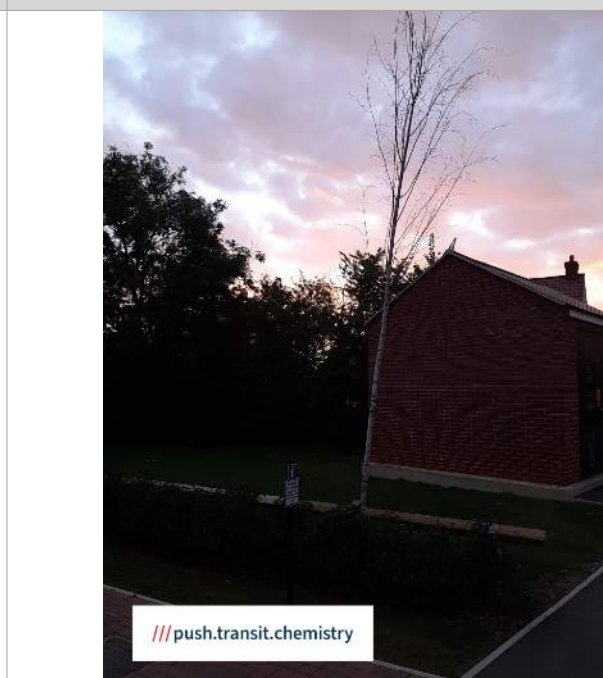
SISKIN WAY - Damaged street light



BRAMBLING WAY - Tree on plan, but missing



BRAMBLING WAY - Dead tree



BRAMBLING WAY - Dead tree



BRAMBLING WAY - Dead tree



NUTHATCH LANE - Dead tree and overgrown verge



SISKIN WAY - Dead tree



CROSSBILL CLOSE - Dead trees



CROSSBILL CLOSE - Dead tree



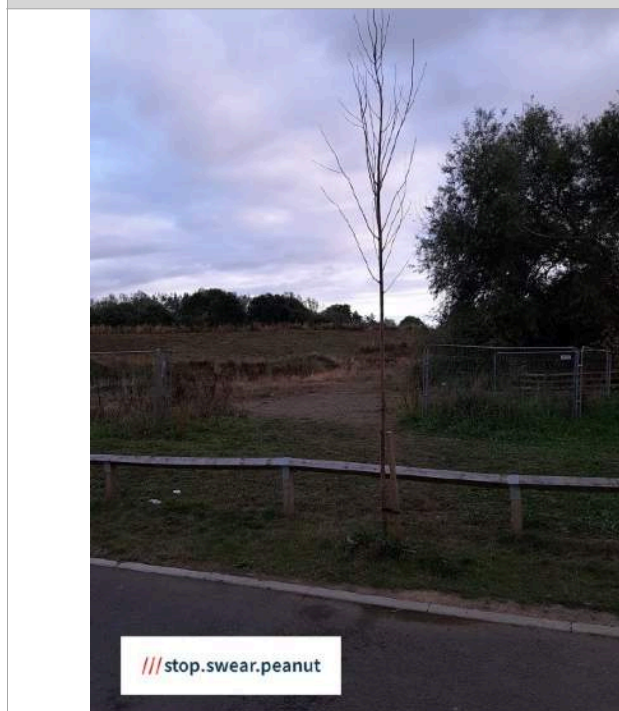
SHELDRAKE LANE - Dead tree



WARBLER CLOSE - dead tree



WARBLER CLOSE - dead tree



WARBLER CLOSE - dead tree

Phase 3

Surveyed by Cllr Holmes

Harrier Way

No maintenance of landscaping has taken place at all in some areas this year and some areas have received only a couple of visits. The whole road is untidy and does not set a good example for current residents and potential residents alike.

Worryingly there is a large open man hole cover missing for several weeks in the road. This causes traffic to have to stop and negotiate at busy times. This is also close to the school. Whilst currently fenced off this should be an **immediate H&S issue** and resolved without fail or delay.



HARRIER WAY - Missing manhole cover



HARRIER WAY - Weeds in verges



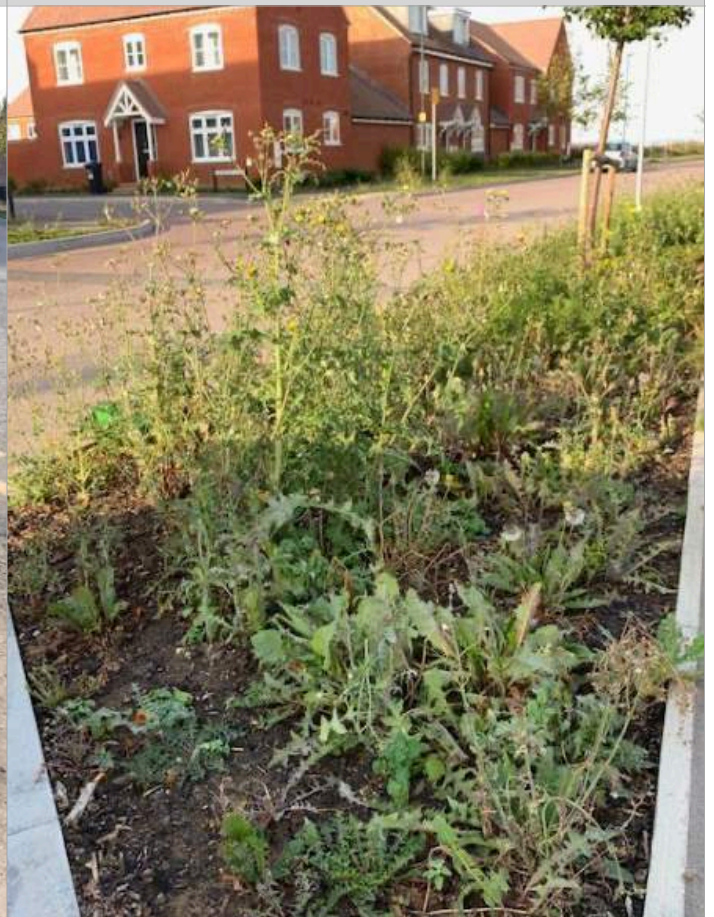
HARRIER WAY - Weeds in verges



HARRIER WAY - Weeds in verges



HARRIER WAY - Weeds in verges



HARRIER WAY - Weeds in verges

Cont...

Bovis / Vistry Area

Noted as quite tidy (They want sales?) Some untidy weeded areas but couldn't be proved is some were residents or contractors' responsibility.

Concerning was the area down by building compound and a joining the school field where a tree and the grounds around that have not been maintained. Also new areas off Hunts Grove Drive where seeding of grassed areas is just over builder's spoil (no top soil).

It would appear that other more established areas would have been turfed looking at quality of the grass. One protected tree in desperate need of remedial work.



BOVIS - Weeds in verges along Hunts Grove Drive



BOVIS - Appears turf is used in some areas rather than seeding?



BOVIS - Mature tree in poor condition. PC would like to check status for maintenance / remedial work.



BOVIS - Weeds around site compound



BOVIS - Poor quality of topsoil for verges



BOVIS - Poor quality of final topsoil for verges



BOVIS - Weeds



BOVIS - Poor quality of final topsoil for verges

Cont...

Bellway/POS

Again some areas including the POS have had no maintenance at all. One area at the end of the small yellow path appears to have been flailed down with much dead grass in the surface. Not sure if this is just a start of a proper prep or is a final surface. Clarification needed.

Noted that there were several alterations to frontage on some properties and extra parking being created.

Yellow path has again multiple cracks including one really deep and wide one (car keys used as guide). POS various places with fence rail removed and multiple residents dumping grass and turf plus one has used it for his own building spoil (spotted by me with the lorry and grab lorry Friday).

Bellway has also started to use POS for their own dumping and storage and looks a mess. Knotgrass sign has been hit and damaged. Bellway sale office path across POS needs removing and re instatement of grass required.



KNOTGRASS WAY - Overgrown weeds in verges



KNOTGRASS WAY - Damaged sign



BELLWAY - Missing fence rails and overgrown with weeds



BELLWAY - Using POS for dumping



BELLWAY / HARRIER WAY - Multiple deep post holes





BELLWAY - Old sign post partially removed



BELLWAY - Temporary path, removal and grass needs restoring properly



BELLWAY - Missing fence rail and (reported to council) area being used as a dumping ground by resident for building work



**BELLWAY - Massive subsidence along new path
between Bellway and Shorn Brook**